

Disassembly

This section describes how to disassemble MotoSLVR L9 telephones. Tools and equipment used are listed in Table 1.



Many of the integrated devices used in this phone are vulnerable to damage from ESD. Ensure adequate static protection is in place when handling, shipping, and servicing any internal components.



Avoid stressing the plastic in any way to avoid damage to either the plastic or internal components.

Removing and Replacing the Battery Cover

1. Ensure the phone is turned off.
2. Press the battery cover latch at the top of the phone, and lift the battery cover up from the phone and lift it off (see Figure 3).



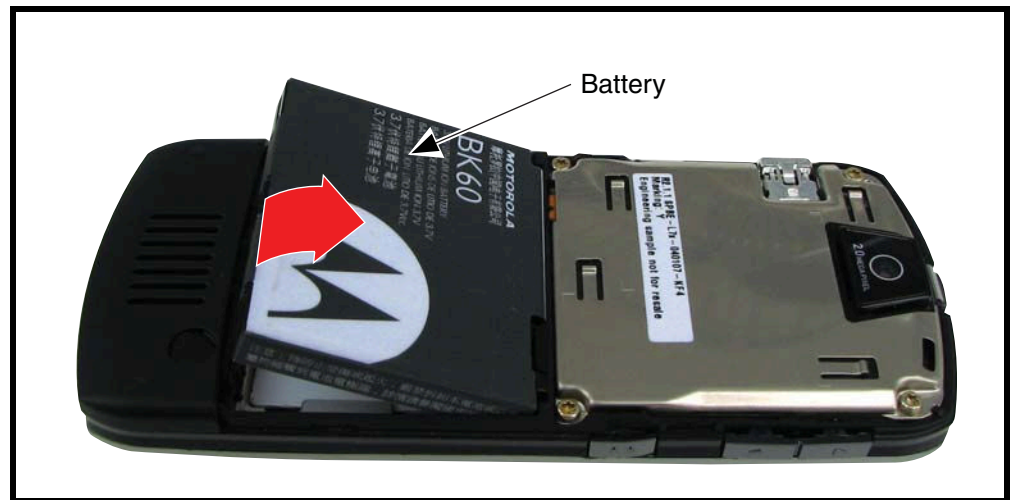
061492o

Figure 3. Removing the Battery Cover

3. To replace, align the battery cover with the rear housing.
4. Place the battery cover on the rear housing and gently press the battery cover until it snaps into place. Ensure that the battery door tap is tucked in below the RF cover.

Removing and Replacing the Battery

1. Remove the battery cover as described in the procedures.
2. Lift the top end of the battery as indicated by the arrow in Figure 4.
3. Lift the battery up and out of the battery compartment.



0614930

Figure 4. Removing and Replacing the Battery



There is a danger of explosion if the Lithium-Ion battery is replaced incorrectly. Replace only with the same type of battery or equivalent as recommended by the battery manufacturer. Dispose of used batteries according to the manufacturer's instructions.

4. To replace, insert the bottom of the battery into the battery compartment with contacts facing downward.
5. Press the top of the battery into the battery compartment.
6. Replace the battery cover as described in the procedures.

Removing and Replacing the SIM

1. Remove the battery cover and battery as described in the procedures.
2. Unlock the SIM holder by sliding it away from the SIM.
3. Lift up the SIM and remove it from the phone (see Figure 5).

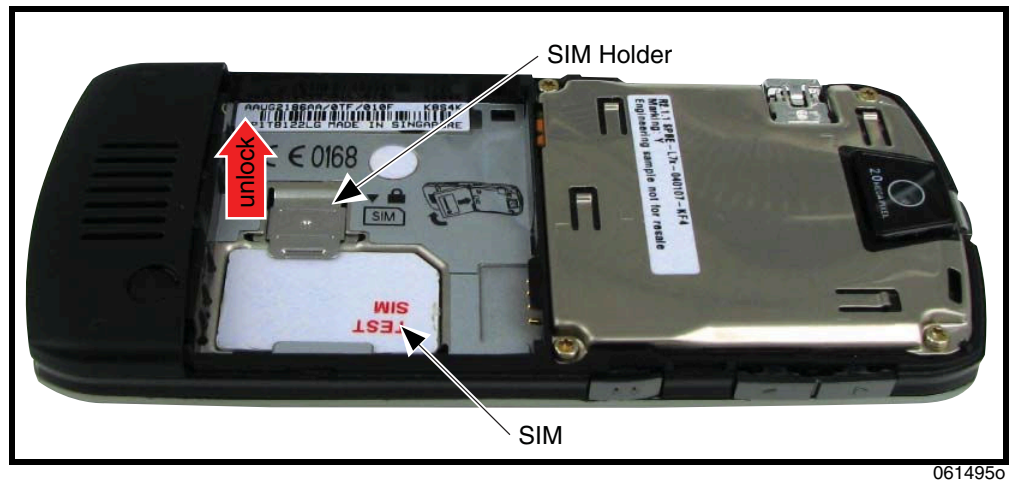


Figure 5. Removing and Replacing the SIM

0614950

4. To replace, slide the SIM into the SIM holder with the notched corner located as shown.
5. Lock the SIM holder by sliding it toward the SIM.
6. Reassemble the battery and battery cover as described in the procedures.

Removing and Replacing the Antenna Cap

1. Remove the battery cover, battery and SIM, as described in the procedures.
2. Insert the disassembly tool under each side of the antenna cover to release the antenna cover latches (see Figure 9).

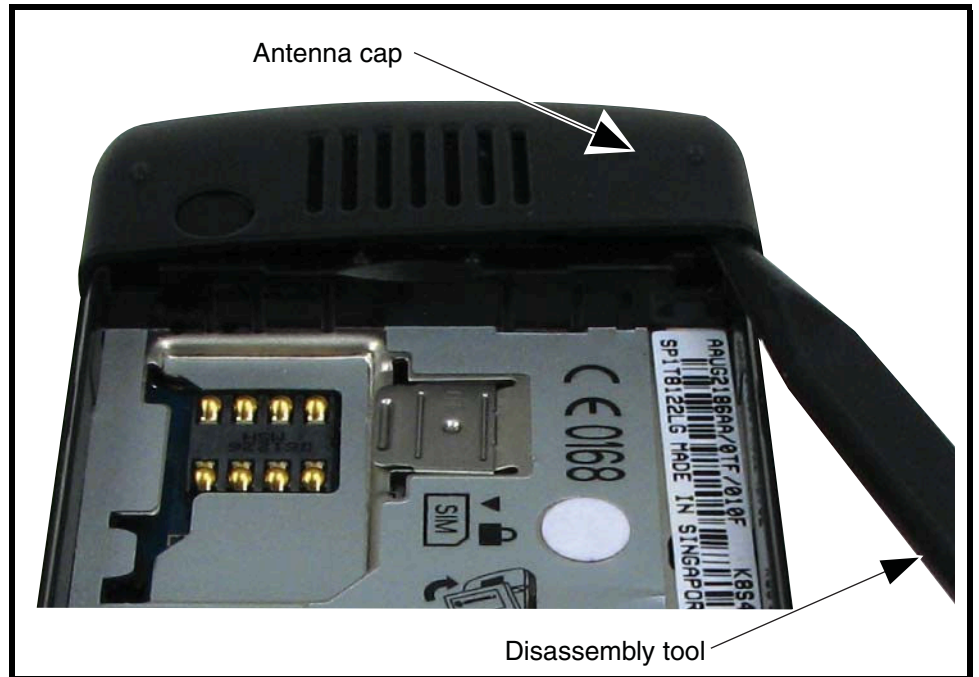
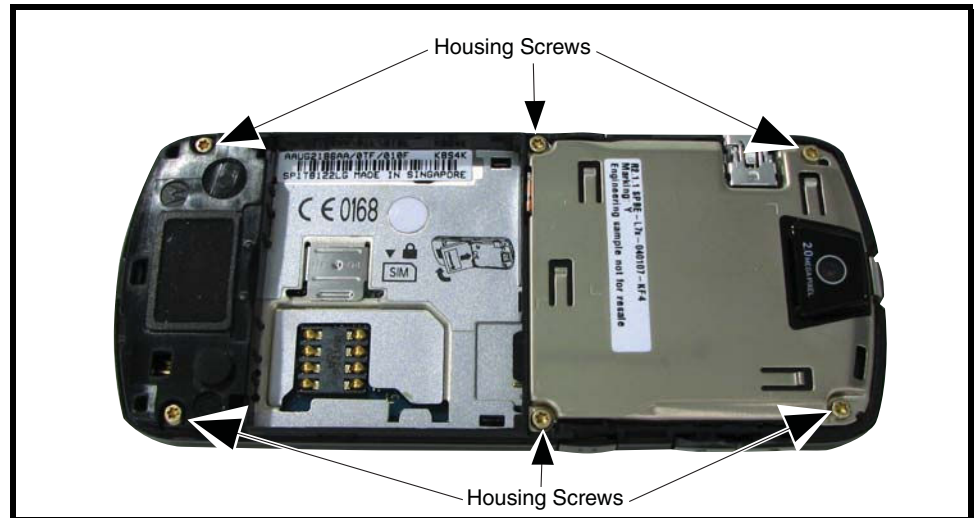


Figure 6. Removing the Antenna Cap

3. Carefully lift the antenna cap away from the phone.
4. To replace, align the antenna cap over the antenna.
5. Place the curved edge of the antenna cap onto the phone.
6. Carefully press the straight edge of the antenna cap into place until the latches snap into place.
7. Reassemble the SIM, battery, and battery cover as described in the procedures.

Removing and Replacing the Transceiver PC Board Shield

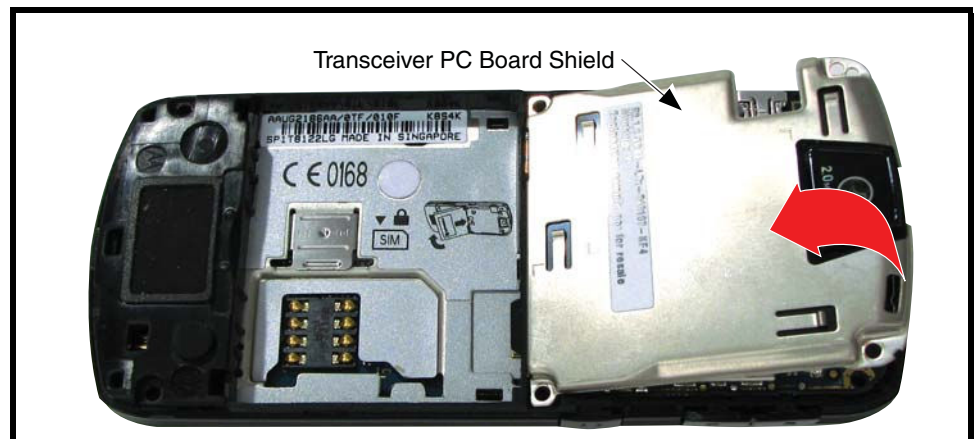
1. Remove the battery cover, battery, SIM, and antenna, as described in the procedures.
2. Using a Torx Plus driver with a T6 bit, remove the 6 housing screws from the phone. Set the screws aside for re-use (see Figure 7).



061497o

Figure 7. Removing and Replacing the Rear Housing Screws.

3. Lift the PCB shield away from the phone.



061498o

Figure 8. Removing and Replacing the Transceiver PC Board Shield.

4. To replace, place the PC board shield onto the phone. Ensure the PCB and PCB shield are aligned with the chassis alignment pin.
5. Insert and tighten the 6 T6 screws to a torque setting of 14 Ncm. Do not overtighten.
6. Reassemble the antenna cap, SIM, battery and battery cover as described in the procedures.

Removing and Replacing the Transceiver PC Board

1. Remove the battery cover, battery, SIM, and rear housing as described in the procedures..

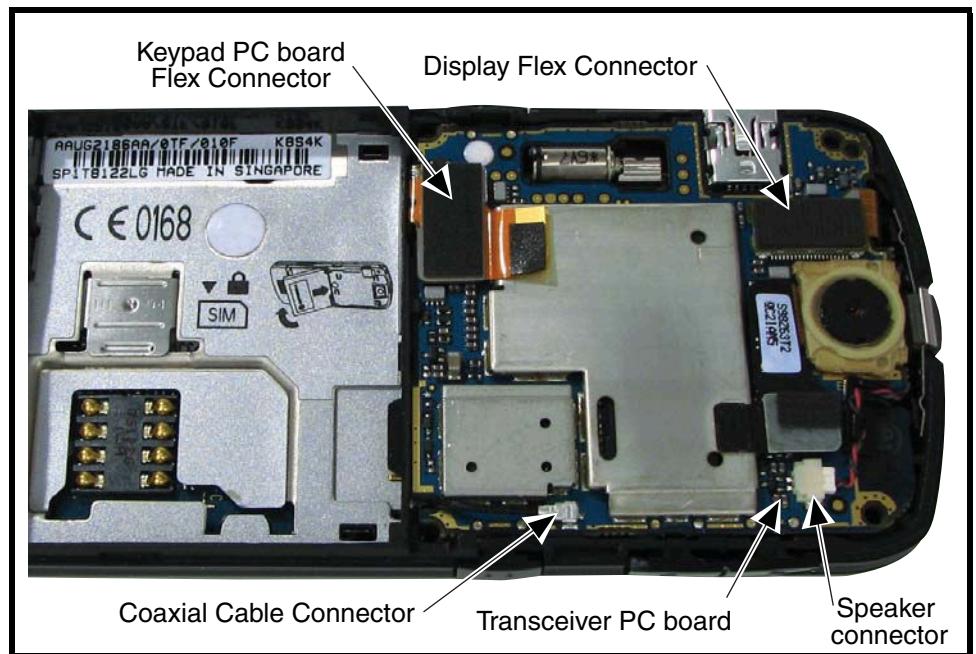


This product contains static-sensitive devices. Use anti-static handling procedures to prevent ESD and component damage.



The flexible printed cable (FPC) (flex) is easily damaged. Exercise extreme care when handling.

2. Insert the flat end of the disassembly tool under the keypad PC board flex connector to unseat it from the transceiver PC board (see Figure 9).



0614990

Figure 9. Removing the Transceiver PC Board Connectors

3. Unseat the display flex connector with the flat edge of the disassembly tool (see Figure 9).
4. Use the metal tweezers to remove the speaker connector plug from its socket (see Figure 9).

5. Use the coaxial cable extraction tool (see Figure 12) to unseat the coaxial cable connector from the transceiver PC board (see Figure 13)..

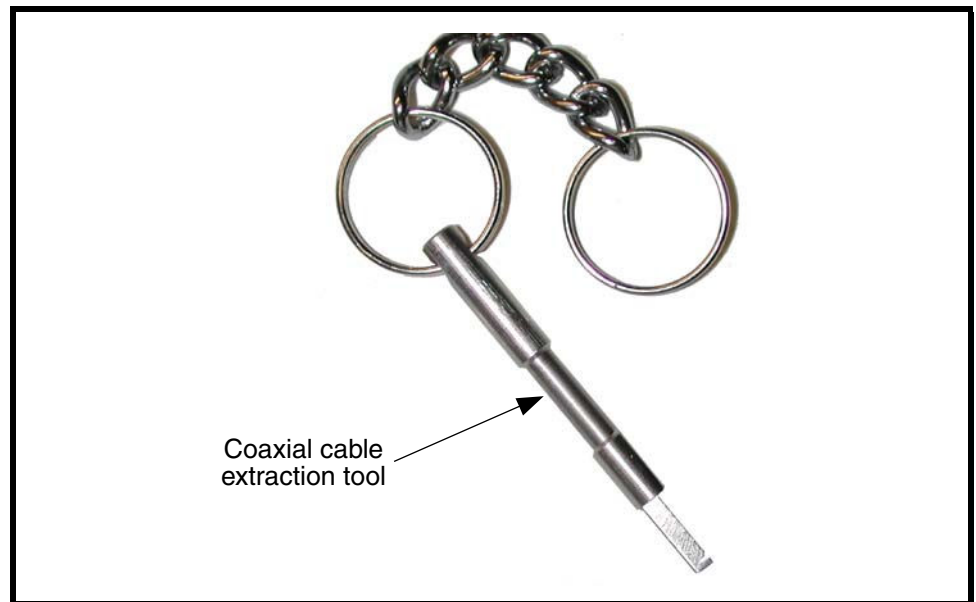


Figure 10. Coaxial Cable Extraction Tool

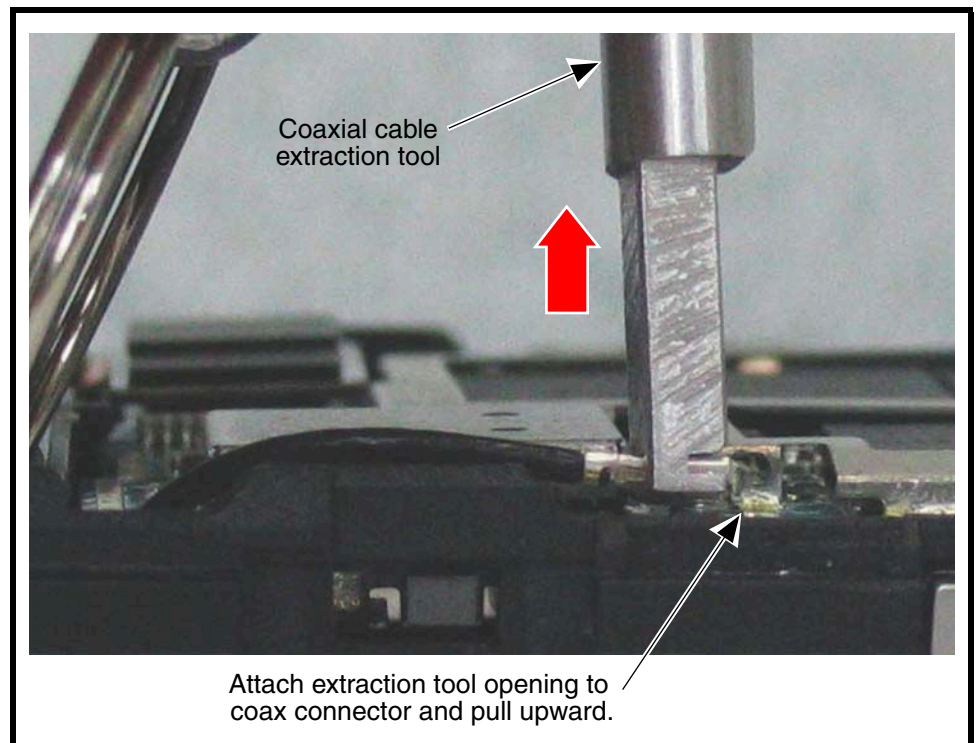


Figure 11. Coaxial Cable Extraction Tool

6. Use the disassembly tool to unseat the keypad PC board flex connector from its socket on the Transceiver PC board (see Figure 9)
7. Carefully lift one side of the transceiver PC board out of the phone. Be careful to avoid damage to the two flex cables and the coaxial cable.
8. Lift the transceiver PC board completely out of the phone.
9. To replace, carefully insert the side edge of the transceiver PC board into the phone chassis. Avoid damaging the battery pogo pins.
10. Carefully re-attach the display flex connector, the main flex connector, and the coaxial cable, to the transceiver PC board. Ensure the coaxial connector is positioned on the slot.
11. Reassemble the transceiver PC board shield, antenna cap, SIM, battery and battery cover as described in the procedures.

Removing and Replacing the Camera Assembly

1. Remove the battery cover, battery, SIM, antenna, and transceiver PC board as described in the procedures..



This product contains static-sensitive devices. Use anti-static handling procedures to prevent ESD and component damage.



The flexible printed cable (FPC) (flex) is easily damaged. Exercise extreme care when handling.

2. Use the disassembly tool to unseat the camera assembly flex connector from the transceiver PC board assembly (see Figure 12).

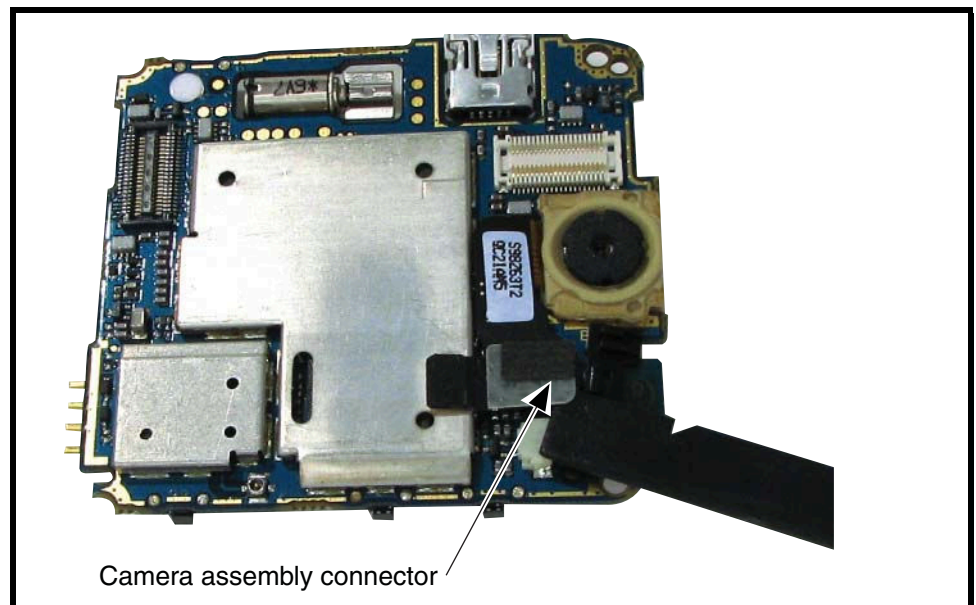


Figure 12. Removing the Camera Assembly Connector

0615420

3. Lift the camera assembly away from the transceiver PC board (see Figure 13).

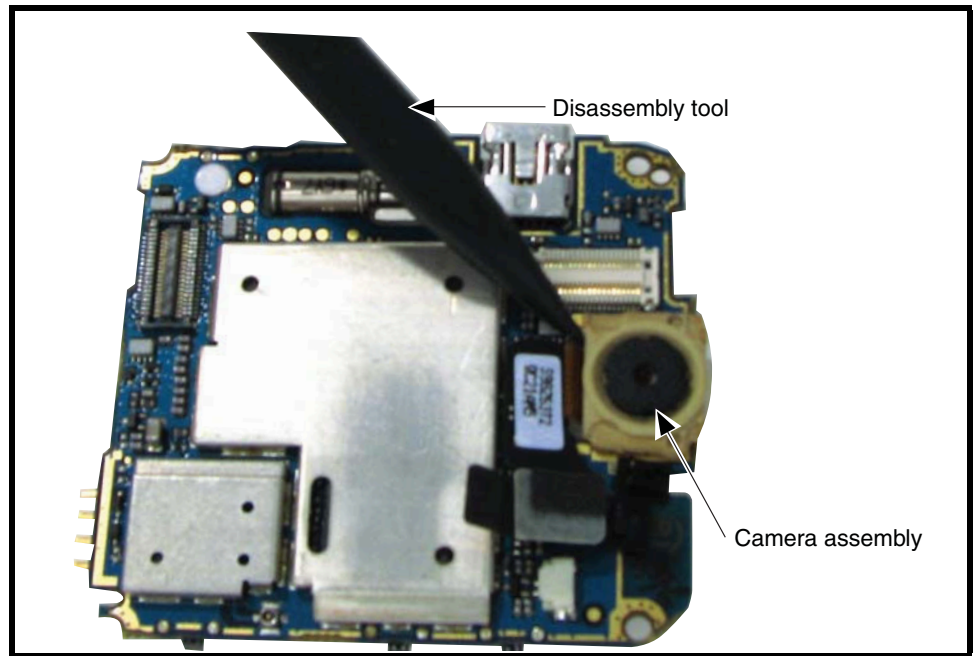


Figure 13. Removing the Camera Assembly

4. Remove the rubber grommet from the camera assembly.
5. To replace, place the rubber camera assembly grommet onto the camera assembly. Ensure the flat side of the grommet is facing away from the flex connector.
6. Align the camera assembly to the transceiver PC board.
7. Slide the camera assembly into its slot on the transceiver PC board. Ensure that the flat side of the camera grommet lines up with the outer edge of the PC board.
8. Carefully press the camera flex connector into its socket on the transceiver PC board.
9. Reassemble the transceiver PC board, transceiver PC board shield, antenna cap, SIM, battery and battery cover as described in the procedures.

Removing and Replacing the Front Housing

1. Remove the battery cover, battery, SIM, antenna, and transceiver PC board as described in the procedures.
2. Insert the disassembly tool between the front housing and the chassis assembly (see Figure 14).



0615050

Figure 14. Releasing the Front Housing Catches

3. Slide the disassembly tool around the phone between the front housing and the phone to release the housing catches along the sides of the front housing (see Figure 14).
4. Carefully lift and remove the front housing from the phone.
5. To replace, align the front housing to the phone.
6. Lower the phone onto the front housing and keypad.
7. Carefully and gently press the front housing into the chassis until all of the housing catches are engaged.
8. Reassemble the transceiver PC board, transceiver PC board shield, antenna cap, SIM, battery and battery cover as described in the procedures.

Removing and Replacing the Keypad

1. Remove the battery cover, battery, SIM, rear housing, and transceiver PC board, as described in the procedures.
2. Lift the keypad up from one corner as shown in Figure 15 and remove it from the front housing.

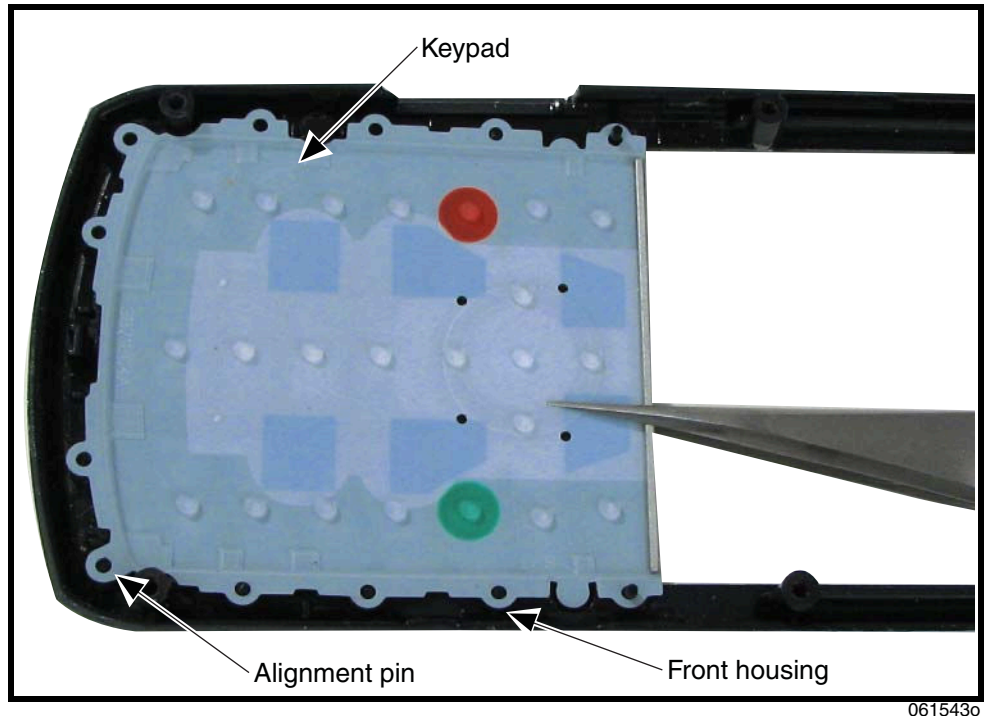
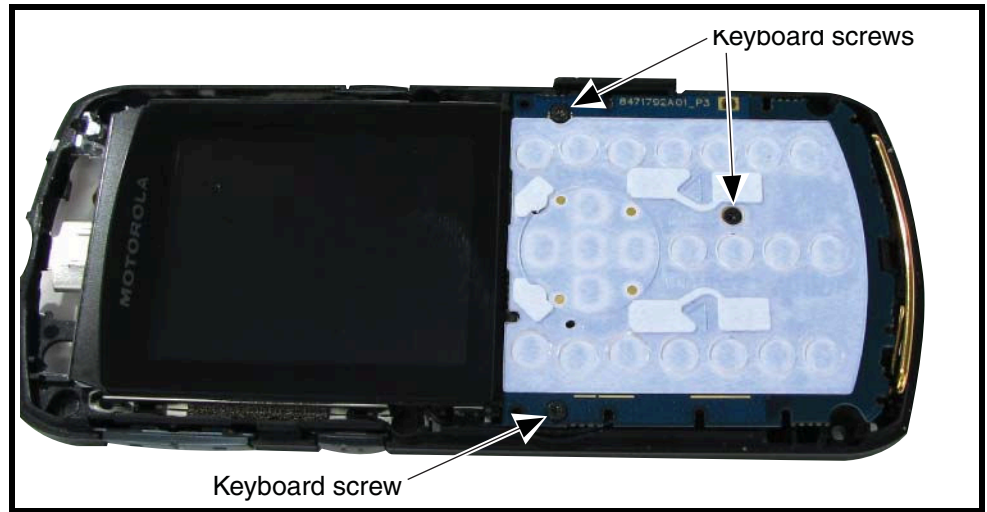


Figure 15. Removing and Replacing the Keypad

3. To replace, align the keypad holes with the front housing pins and place the keypad onto the front housing.
4. Reassemble the front housing, transceiver PC board, transceiver PC board shield, antenna cap, SIM, battery and battery cover as described in the procedures.

Removing and Replacing the Keypad PC Board

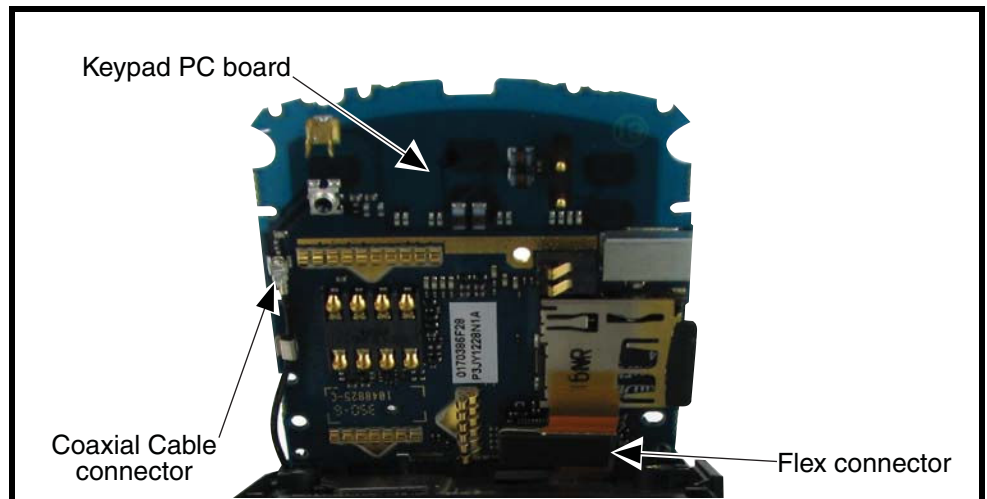
1. Remove the battery cover, battery, SIM, antenna, transceiver PC board, and front housing, as described in the procedures.
2. Use the Torx driver with a T3 bit to remove the 3 screws from the Keypad PC board (see Figure 16).



061616o

Figure 16. Removing the Keypad PC Board Screws

3. Rotate the end of the PC board up and disconnect the flex connector underneath the keypad PC board (see Figure 17).



061544o

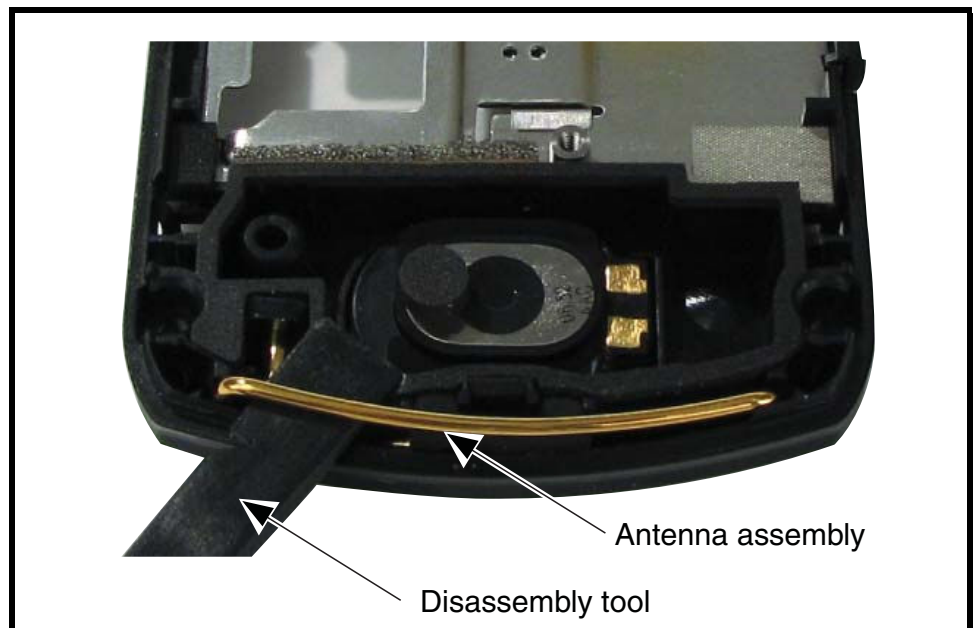
Figure 17. Removing the Keypad PC Board Flex Connector

4. Use the coaxial cable extraction tool to disconnect the coaxial cable connector from the PC board and move the coaxial cable away from the PC board.
5. Remove the silver colored chassis seal.

6. Remove the flex from the chassis.
7. Left the keypad PC board away from the phone.
8. To replace, align the flex connector the keypad PC board and gently press the connector until properly seated in the connector socket.
9. Thread the coaxial cable around the cable guide and seat the connector onto its socket on the keypad PC board.
10. Insert and tighten the 2 T3 screws.
11. Paste on the silver chassis seal.
12. Reassemble the front housing, transceiver PC board, transceiver PC board shield, antenna cap, SIM, battery and battery cover as described in the procedures.

Removing and Replacing the Antenna

1. Remove the battery cover, battery and SIM, as described in the procedures.
2. Use the plastic tweezers to lift the antenna assembly out of the phone (see Figure 18).



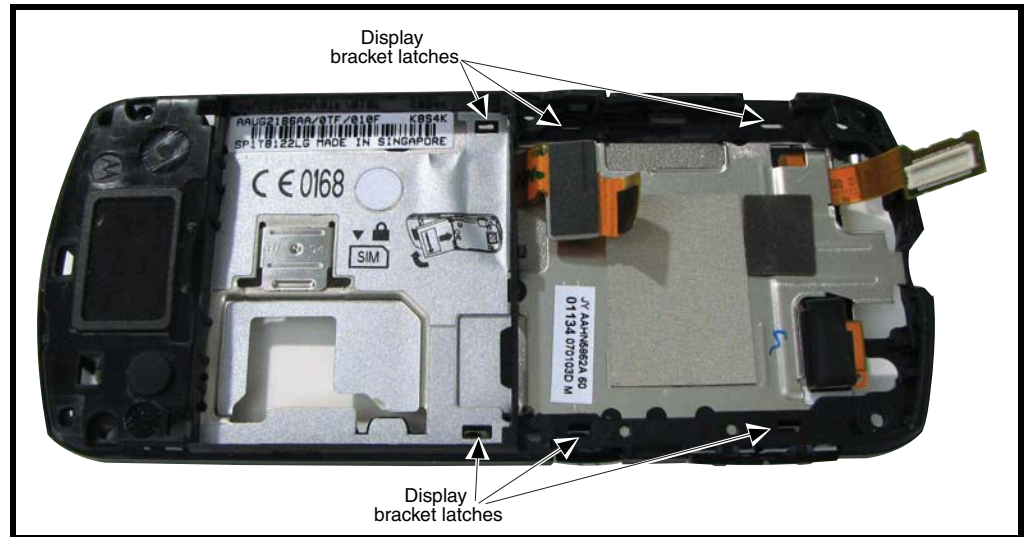
0616180

Figure 18. Removing and Replacing the Antenna

3. Carefully remove the antenna from the phone.
4. To replace, insert the antenna into the antenna slot on the phone. Ensure the antenna makes contact with the RF contacts on the PC board.
5. Reassemble the keypad PC board, keypad, front housing, transceiver PC board, transceiver PC board shield, antenna cap, SIM, battery and battery cover as described in the procedures.

Removing and Replacing the Display Module

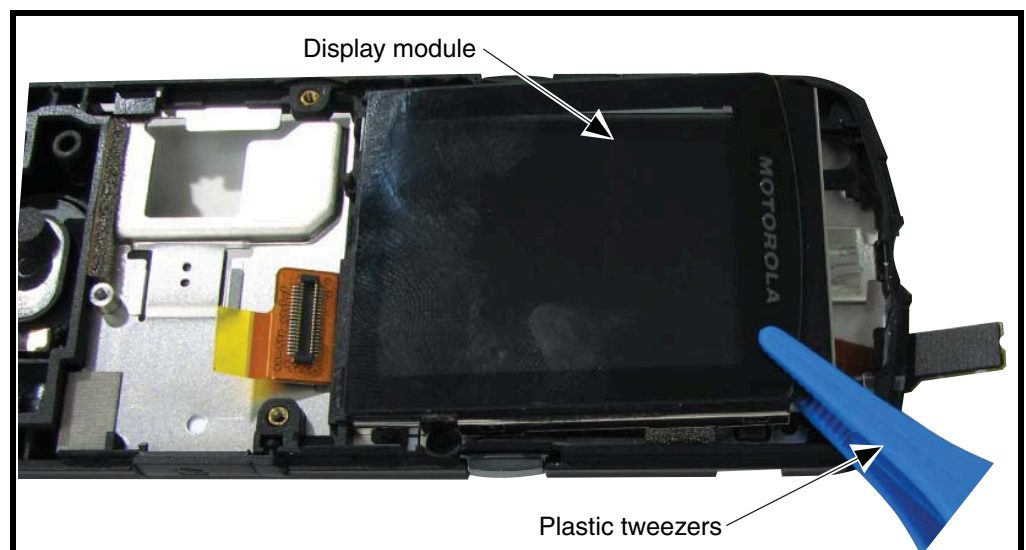
1. Remove the battery cover, battery, rear housing, and transceiver PC board as described in the procedures.
2. Turn over the chassis assembly and use the metal tweezers to release the six display bracket latches located under the chassis assembly (see Figure 19).



0616190

Figure 19. Removing the Display Module Latches

3. Turn the chassis assembly over and lift the top edge of the display module (see Figure 20).



0616200

Figure 20. Removing the Display Module

4. Carefully thread the display flex cable through the slot in the chassis assembly and lift the display module away from the chassis.
5. To replace, align the display module to the chassis assembly.
6. Hold the side of the display module near the flex cable away from the chassis assembly.
7. Carefully thread the display flex connector through the opening on the chassis assembly.
8. Lower the display module fully onto the chassis assembly and gently press it into place.
9. Reassemble the antenna, keypad PC board, keypad, front housing, transceiver PC board, transceiver PC board shield, antenna cap, SIM, battery and battery cover as described in the procedures.