



W230

## *getting to know your phone*



MOTOROLA and the Stylized M Logo are registered in the US Patent & Trademark Office.  
© Motorola, Inc. 2008

Certain mobile phone features are dependent on the capabilities and settings of your service provider's network. Additionally, certain features may not be activated by your service provider, and/or the provider's network settings may limit the feature's functionality. Always contact your service provider about feature availability and functionality. All features, functionality, and other product specifications, as well as the information contained in this tutorial, are based on the latest available information and believed to be accurate at the time of publication. Motorola reserves the right to change or modify any information or specifications without notice or obligation.

Service dependent features may vary. Screen images may be simulated or enhanced to show detail.


**Note:** Your phone may not appear exactly as the phone image above, however, all key locations, sequences, and functions remain the same.



## *make, end, and answer calls*

### **1.**

To make a call:


On the home screen, enter a number and press .

**Tip:** Press **DELETE** to delete the last number. Press **STORE**, and then **DONE** to add the number to your contacts.




### **2.**

To end a call:

Press .

### **3.**

To answer a call:

When your phone rings or vibrates, press .

**Tip:** To answer with any key, go to main menu and select **Settings > In Call Setup**. Set **Answer Options** to **Multi-key On**.



## ***save and call contacts***

You can save up to 500 contacts!

### **1.**

To save a contact:

On the home screen, enter the number and press **Store**.



### **2.**

Enter the contact details.

When you are finished press **DONE**.



### **3.**

To call a contact:

On the home screen, press **•••** > **Contacts**.



### **4.**

Select the contact and press **•••**.

**Tip:** To find contacts in the list, enter the first letters of the contact.



### ***Tip:***


To call a contact using the speed dial number, press and hold the corresponding number, 1-9.



## ***send a text message***

Your phone can store up to 500 SMS messages!

**1.**

On the home screen, press  > **Messages** > **Create**.




**2.**

Select the message type: **SMS/EMS** or **MMS**.



**3.**

Enter your message and press **OK**.

**Tip:** In the text entry screen, press  to switch text modes.



**4.**

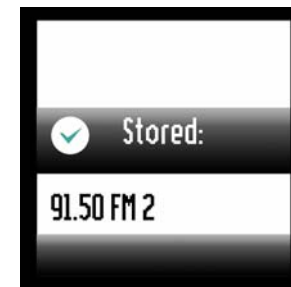
Scroll to the recipient(s) and press **ADD**. Press **SEND** to send the message.





## use FM radio

- 1.**  
Insert a 2.5 mm headset into your phone.  
  
**Note:** The FM radio works only when the headset is plugged in.
- 2.**  
On the home screen, press > **Multimedia** > **FM Radio**.
  - To tune in a station, press left or right.
  - To scan stations, press & hold left or right.
  - To adjust volume, press up or down.
  - To turn radio off, unplug headset.
  - To play the radio through the speaker or headset, press .
- 3.**  
To set radio presets:  
Tune in a station, then press and hold a number 1-9.  
  
To play a preset station, press its number.  
  
**Tip:** To use your phone while the radio is playing, press **Options** > **Hide**.



### FM radio tips:

- To record FM radio clips, press **Options** > **Record**. Press **STOP** to stop recording. Clips are stored in phone memory.  
To play clips, from main menu press **Multimedia** > **Music Library** > > **Switch Storage Devices** > **Phone Memory** > **clip**.
- To use FM radio as an alarm, from main menu press **Extras** (or **Office Tools**) > **Alarm Clock** > **New Alarm**. Set **Alert** to **Radio**.  
To use FM radio clip as an alarm, set **Alert** to **Ring** > **Preloaded and downloaded media files** > **clip**.
- To share favorite FM stations with friends, press **Options** > **Send Station Info** > **SMS/EMS** or **MMS** > **OK**. Select recipient, press **ADD**, then press **SEND**.



## *transfer files with a USB cable*

**Note:** Before you connect your phone and PC for the first time, download the USB driver onto your PC, at <http://www.motorola.com/support/W230>.

**1.**

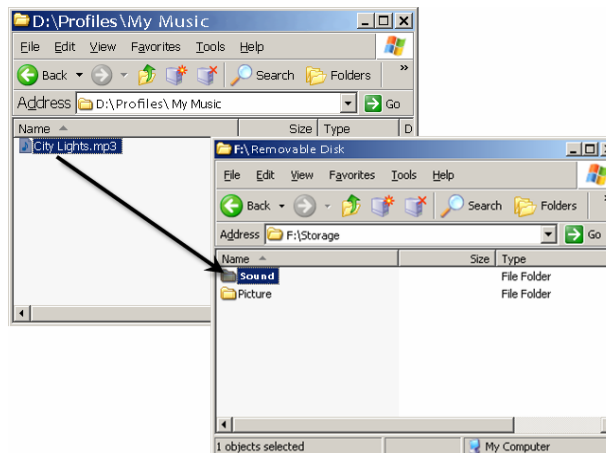
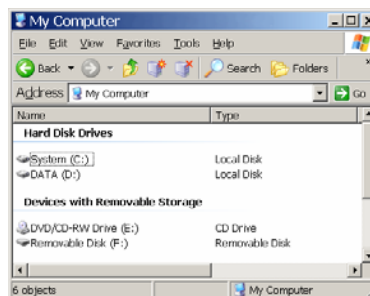
Connect your phone and PC using a USB cable.



**2.**

Use the **My Computer** window to find Removable Device.

Drag and drop files such as music from your PC to your phone.



**3.**

When finished, remove the phone from your PC by using the **Safely Remove Hardware** icon at the bottom of your PC screen. Then disconnect the USB cable.

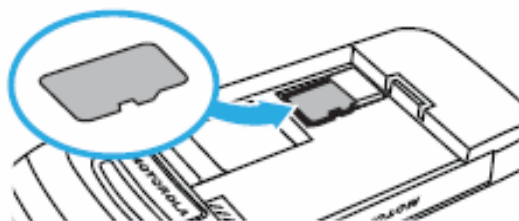




## *play music on my phone*

To use the music player, insert a microSD memory card, an optional accessory.

The music player supports MP3, MIDI, iMelody, and AMR file formats.



**1.**

On the home screen, press > **Multimedia** > **Music Library**.

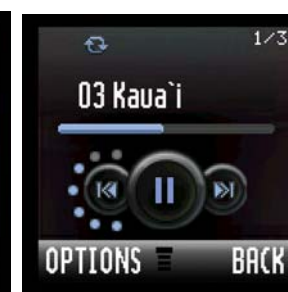


**2.**

Select a song or All Songs and press **PLAY**.

To control music:

- pause or play
- next song; hold for fast forward
- previous song; hold for rewind



### **Tip:**

To switch between music stored on the memory card and music stored on your phone memory, press > **Multimedia** > **Music Library** > > **Switch Storage Devices**.



## customize my phone

1.

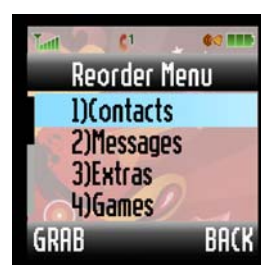
To create home screen shortcuts, press **•◂◃•** > **Personalise** > **Home Screen** > **Home Keys**.

Select **Up**, **Down**, **Left**, **Right**, or a soft key and press **Change**. Select the feature you want to assign.



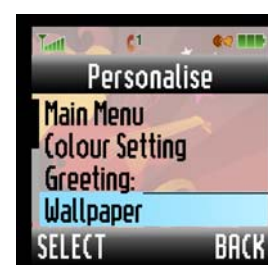
2.

To change the order of the main menu, press **•◂◃•** > **Personalise** > **Main Menu** > **Reorder**. Scroll to the item you want to move and press **Grab**. Then scroll to the destination location and press **Insert** > **Done**.



3.

To change the wallpaper or screen saver, press **•◂◃•** > **Personalise** > **Wallpaper** or **Screen Saver**.



4.

To personalize your ring style, press **•◂◃•** > **Settings** > **Ring Style** > **Style**.

Scroll to the style, press **•◂◃•** > **Back**. Select **style Detail**, and customize the various rings.







## access the web



*This feature is network, SIM card, or subscription dependent and may not be available in all areas. Contact your service provider for more information.*

### 1.

To launch the web browser, press  > **WebAccess** > **Start Browser**.

### 2.

To download a picture, sound, or MMS template from a web page, go to the media file page, highlight the file, then press **SELECT** > **STORE**.

