



1


2

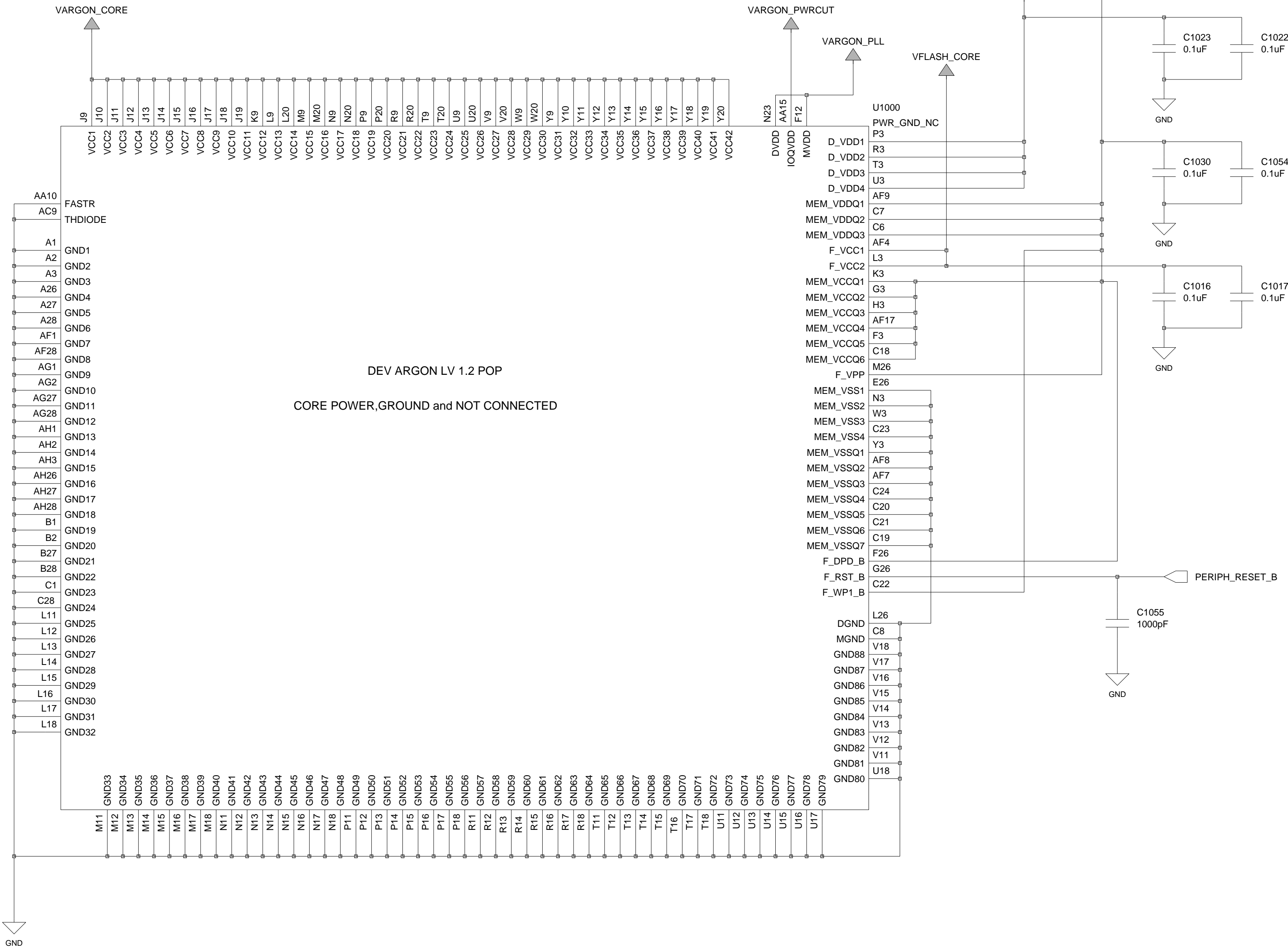
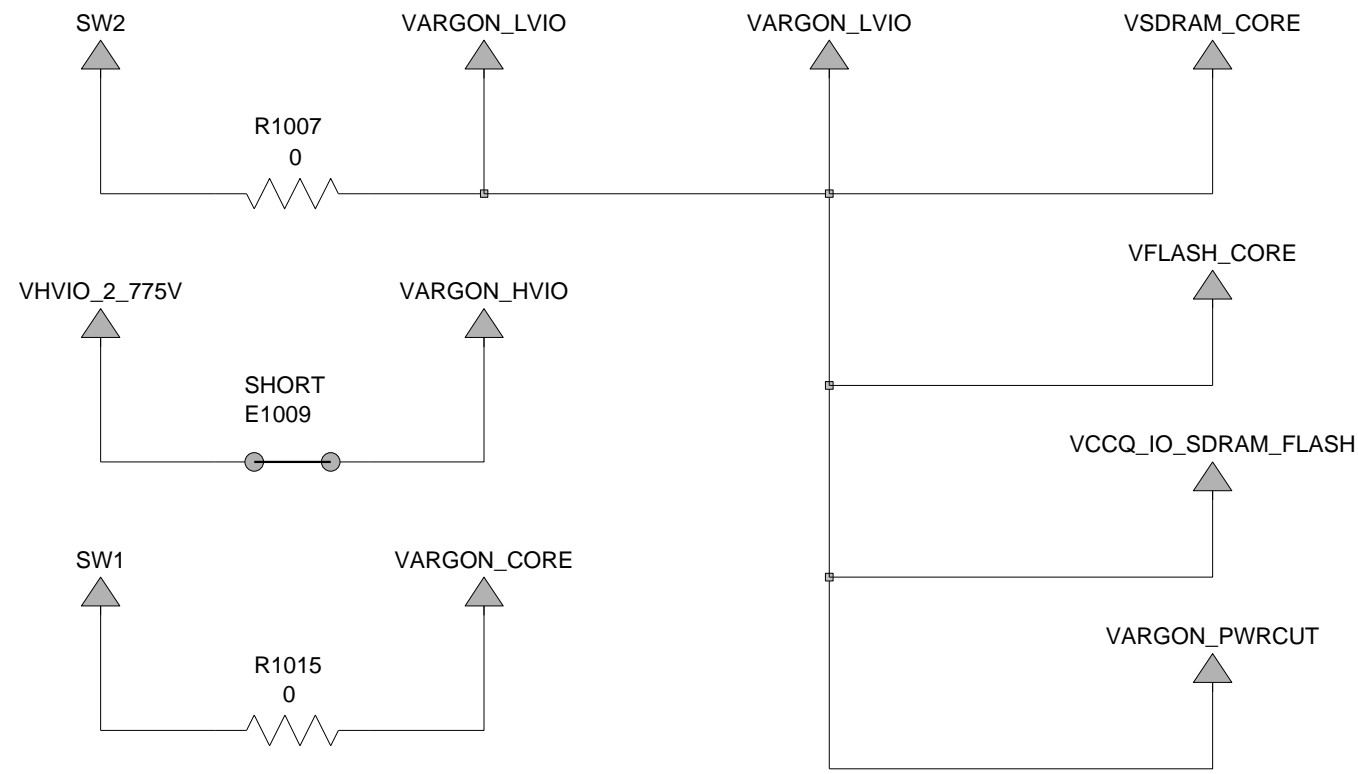
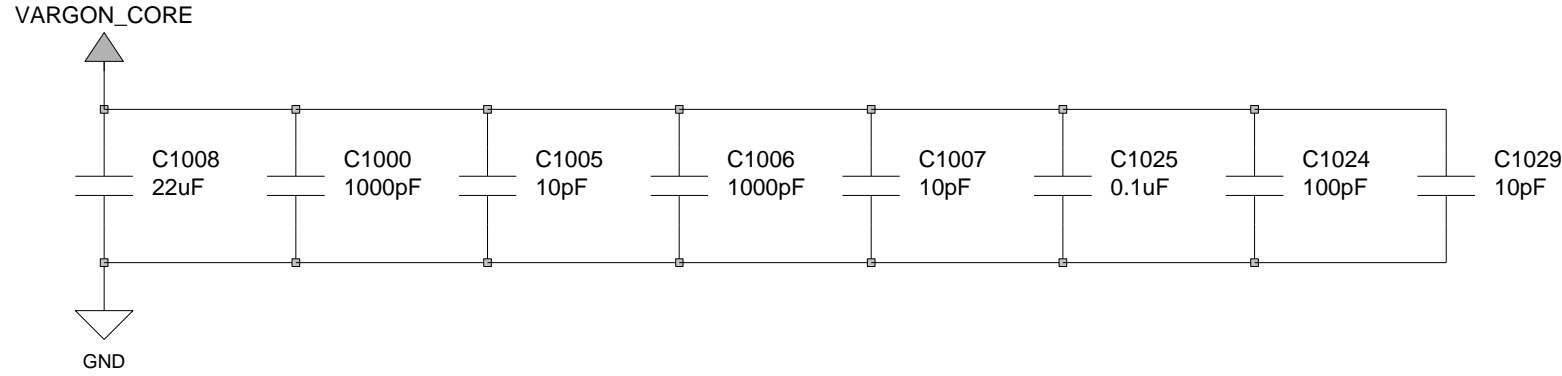
3

4

MOTOROLA CONFIDENTIAL PROPRIETARY

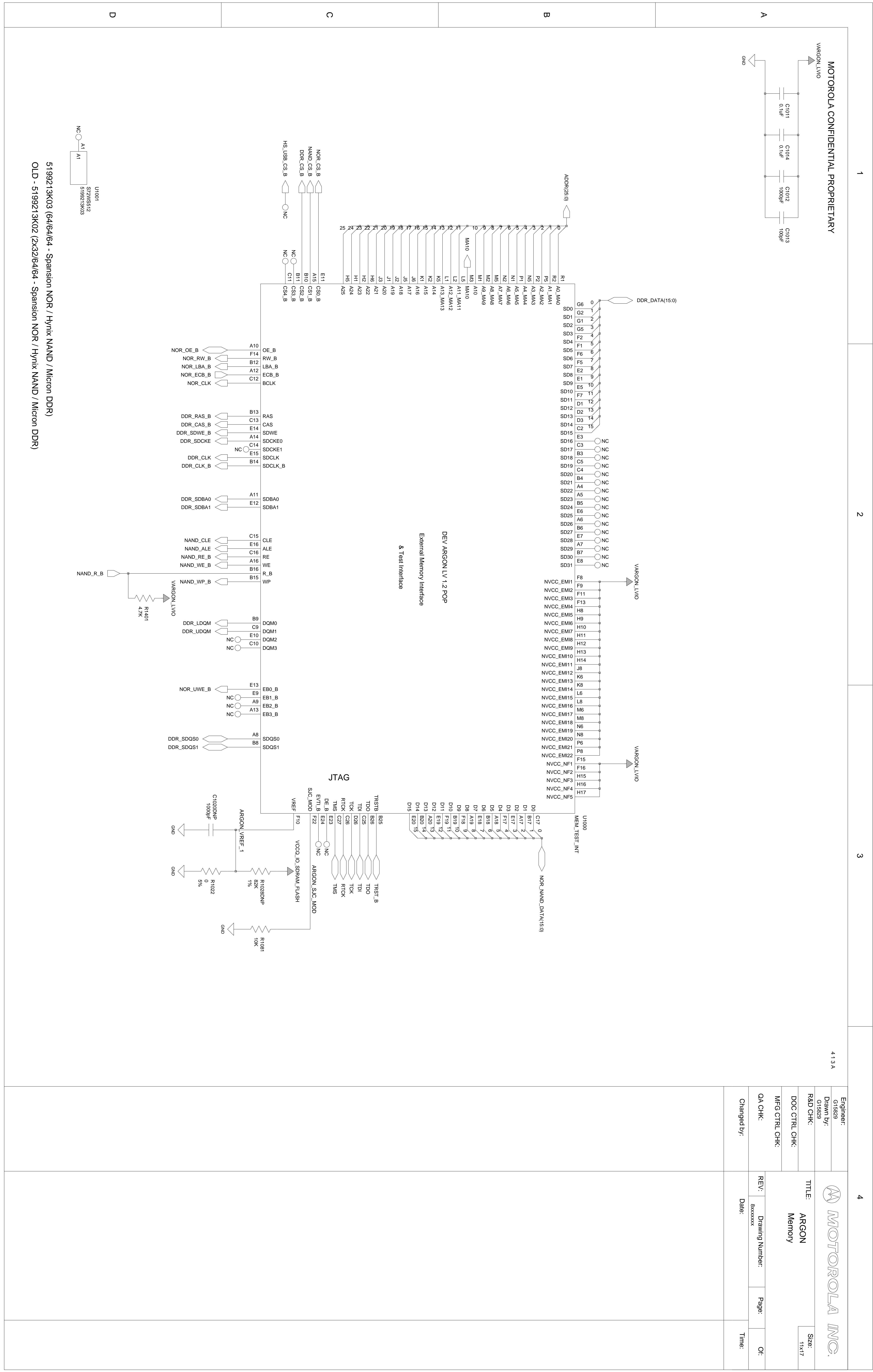
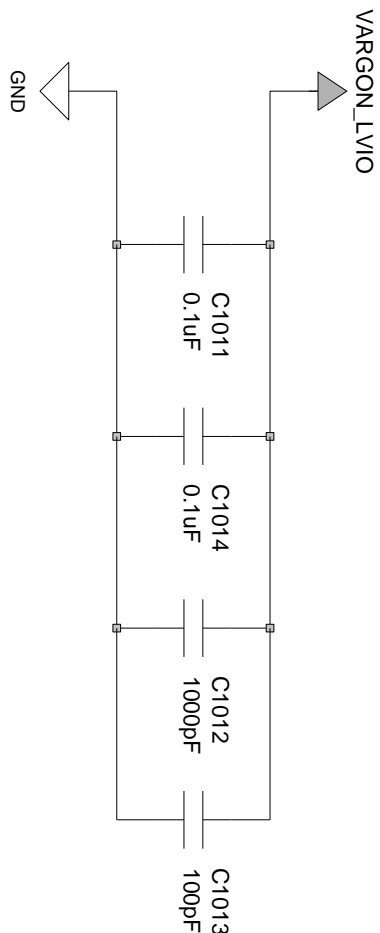
4 1 3 A

Engineer: G15829	<div> <b>MOTOROLA INC.</b></div> <div>TITLE: ARGON Core_Power</div> <div>Size: 11x17</div>			
Drawn by: G15829				
R&D CHK:				
DOC CTRL CHK:				
MFG CTRL CHK:				
QA CHK:	REV:	Drawing Number:	Page:	Of:
Changed by:	Date:		Time:	

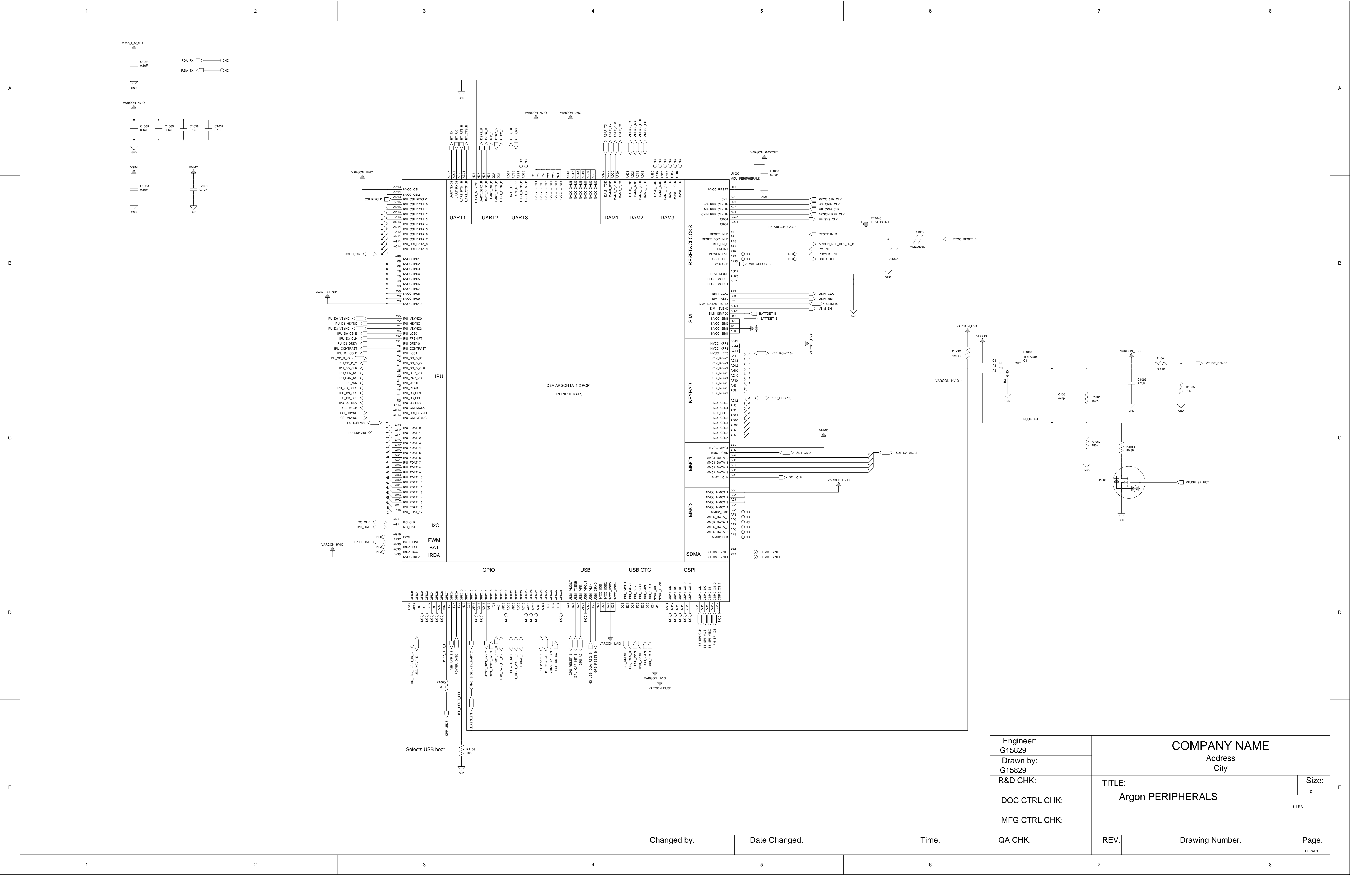




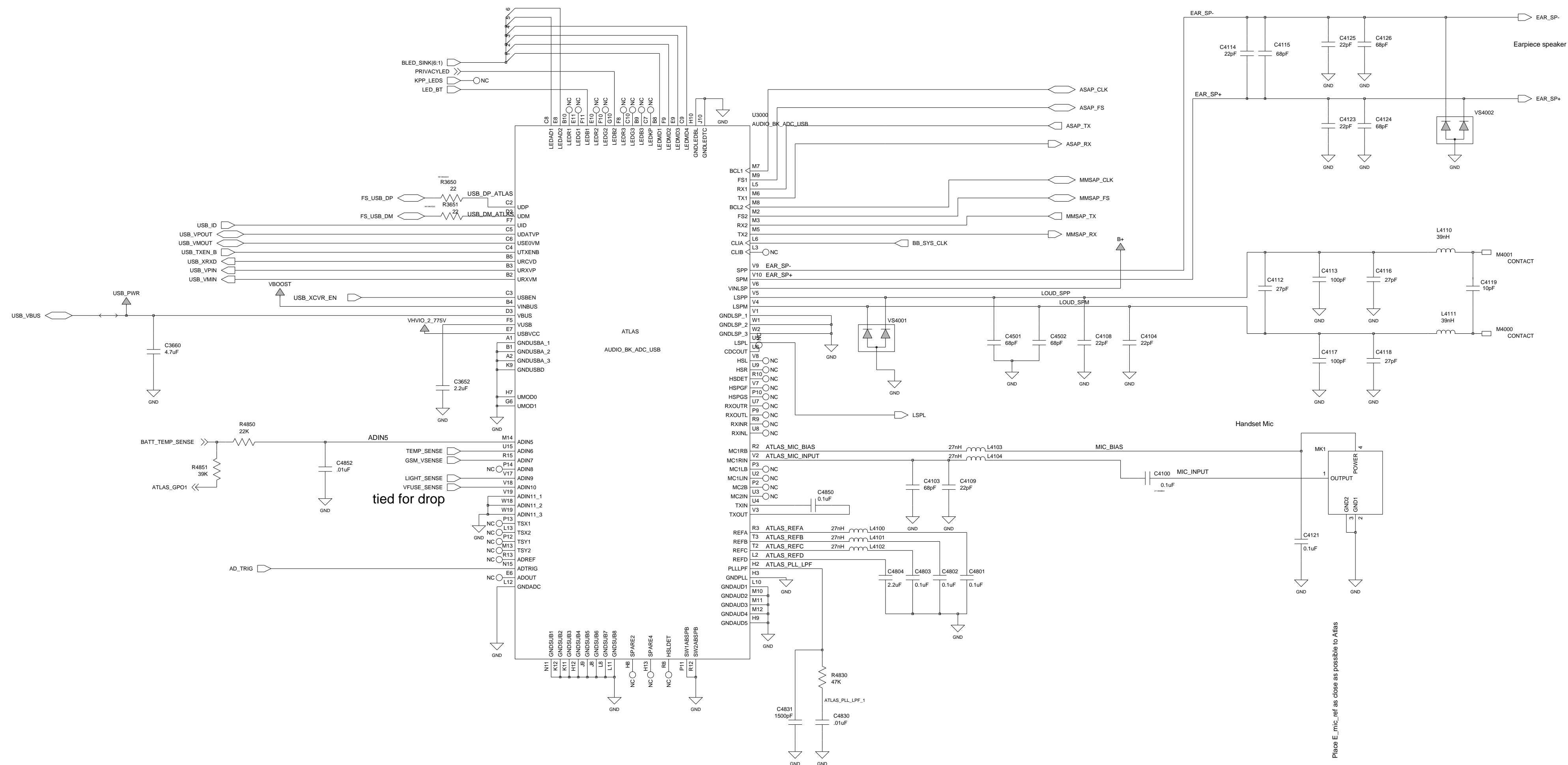
MOTOROLA CONFIDENTIAL PROPRIETARY



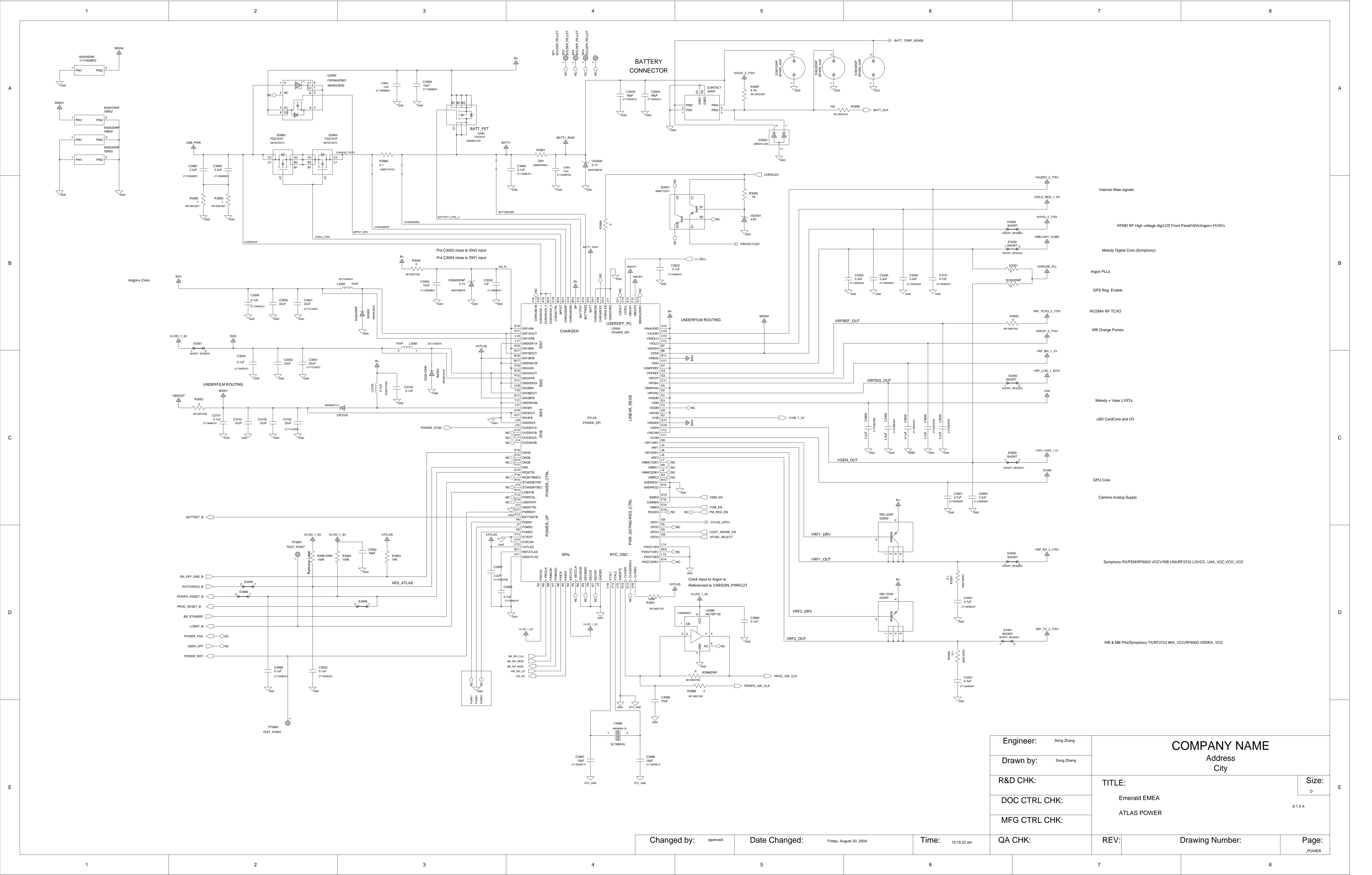
5199213K03 (64/64/64 - Spansion NOR / Hynix NAND / Micron DDR)  
OLD - 5199213K02 (2x32/64/64 - Spansion NOR / Hynix NAND / Micron DDR)

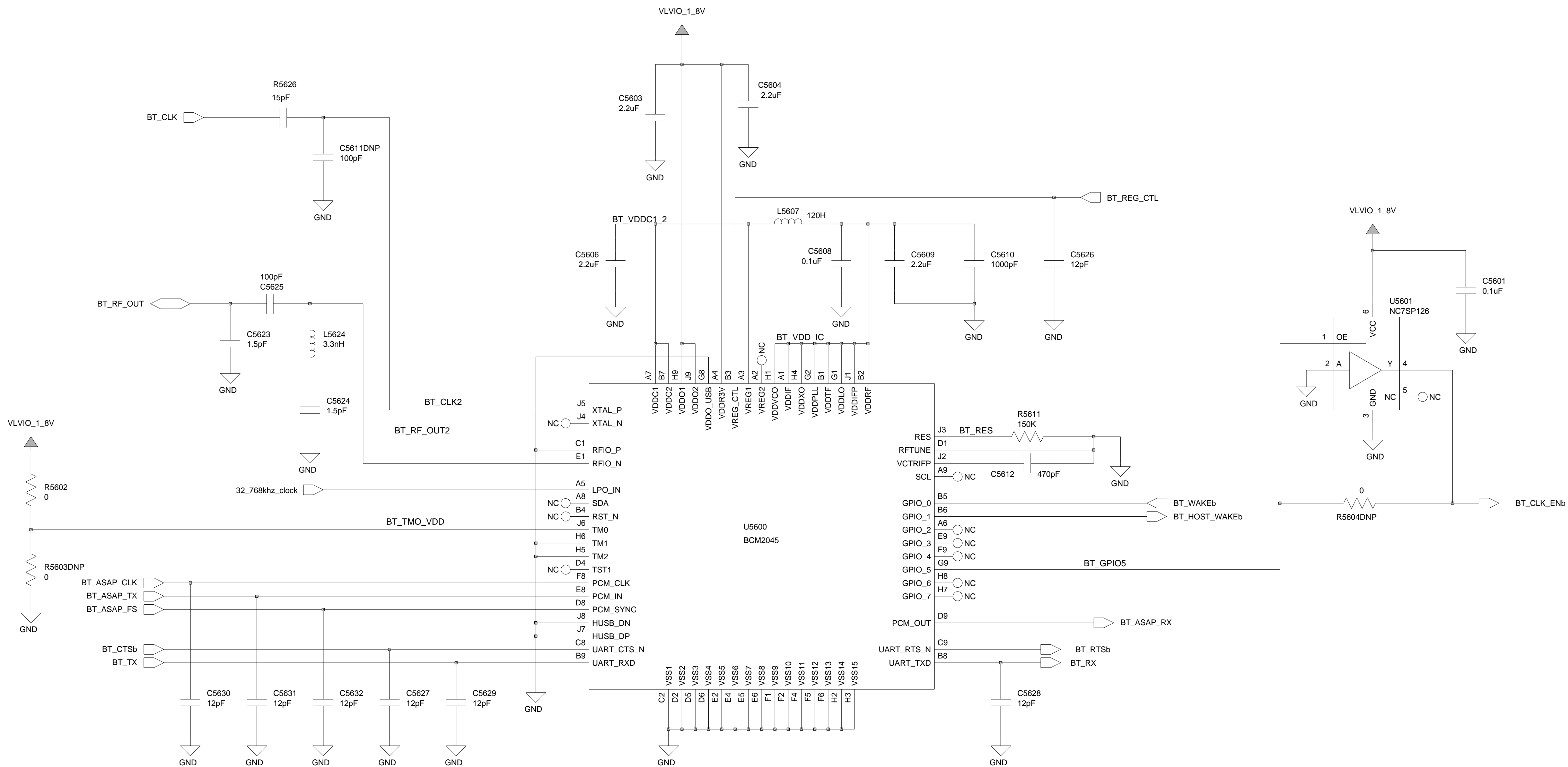


Engineer: G15829	COMPANY NAME Address City		
Drawn by: G15829			
R&D CHK:	TITLE: Argon PERIPHERALS	Size: D	E
DOC CTRL CHK:			
MFG CTRL CHK:			
QA CHK:	REV:	Drawing Number:	Page: HERALS

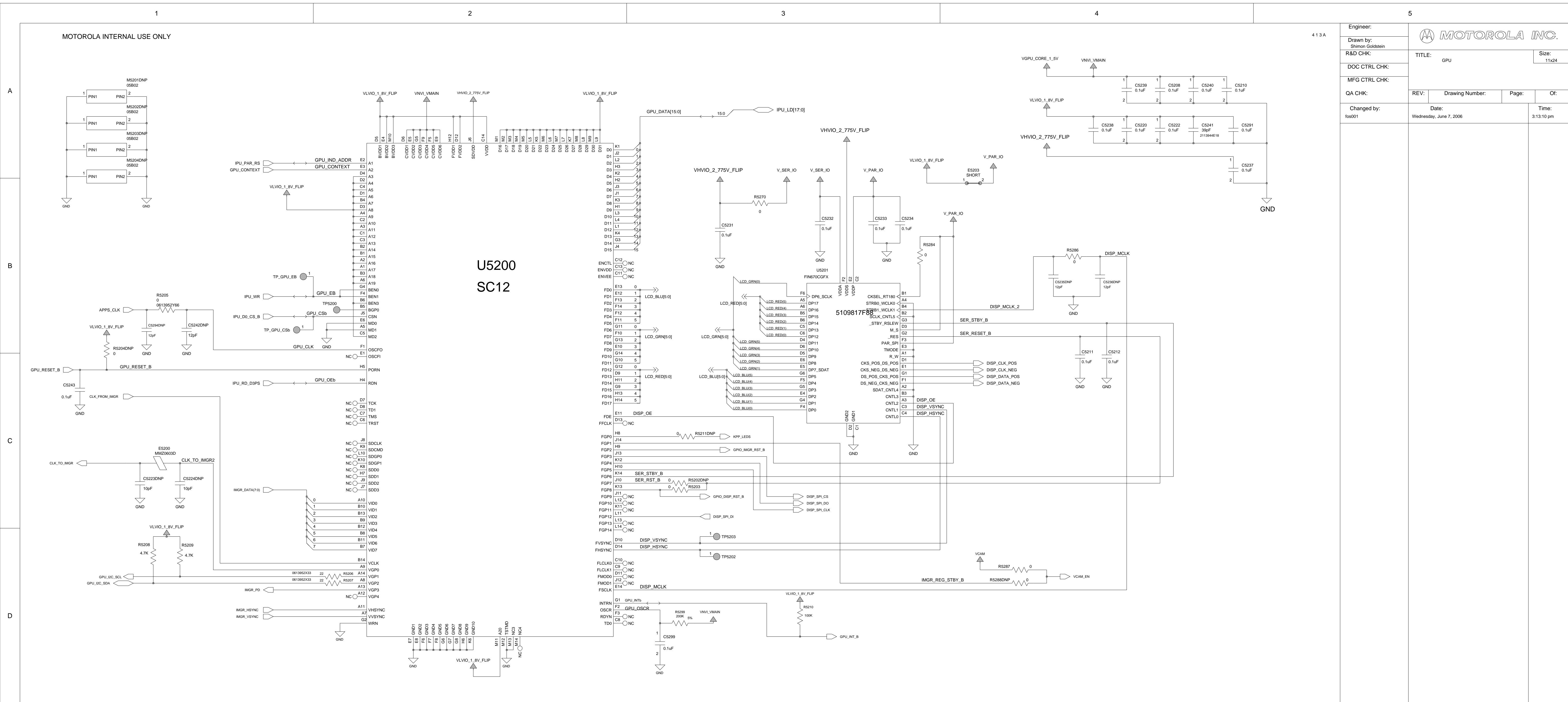


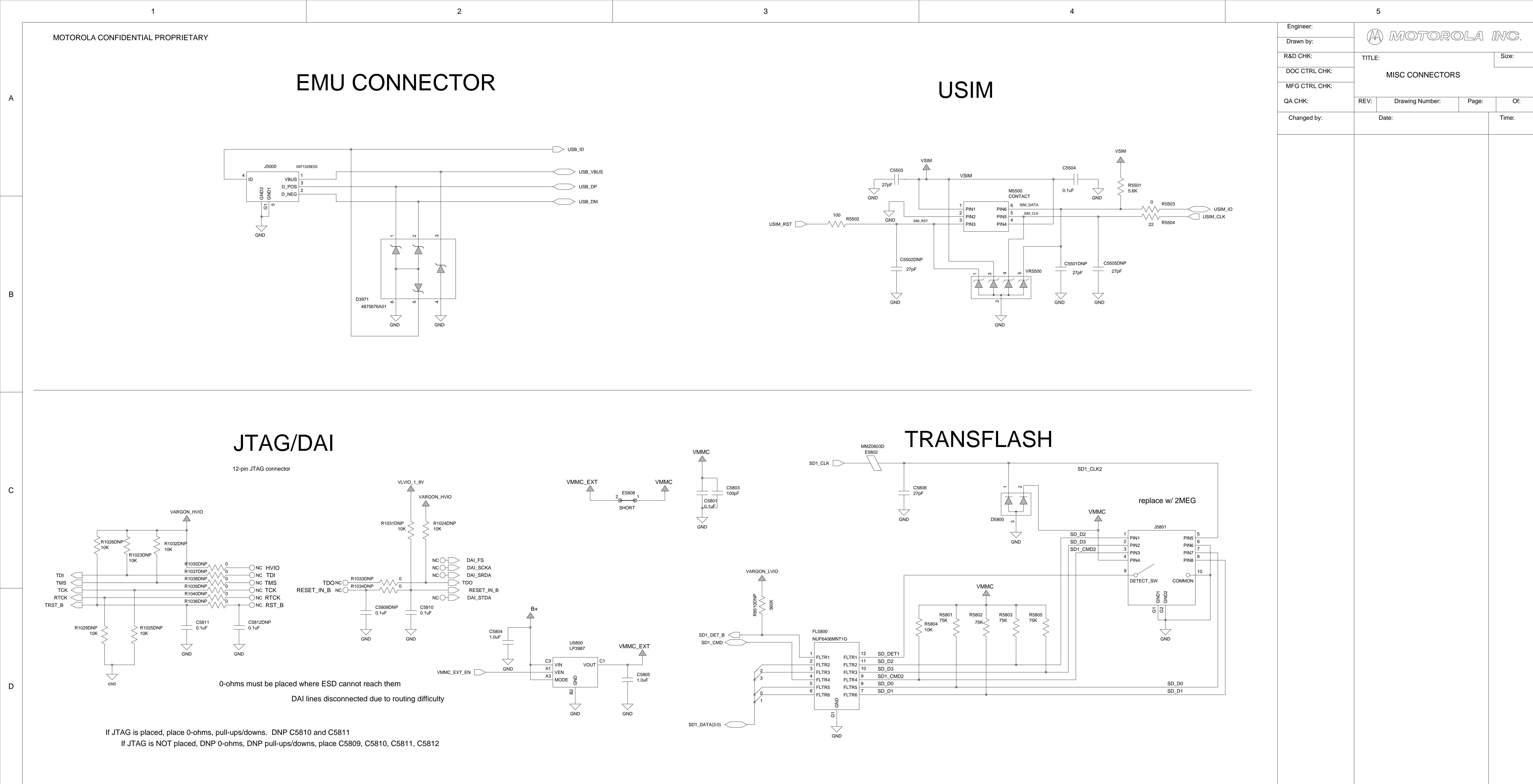
Changed by:	Date Changed:	Time:
-------------	---------------	-------











A

B

C

D



