

2. Use the T5IP driver to remove the two screws that secure the PCB cover. See Figure 6. **T5 screws are silver. T3 screws are black.**

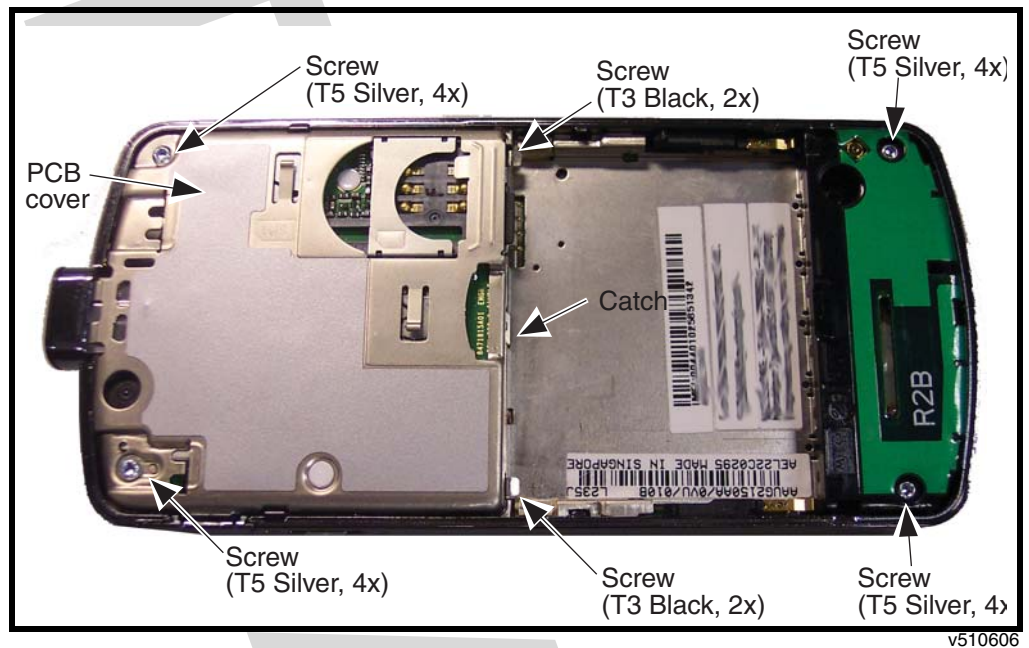


Figure 6. Removing the PCB Cover

3. Use metal tweezers to release the catch on the PCB cover.
4. Remove the PCB cover from the phone.

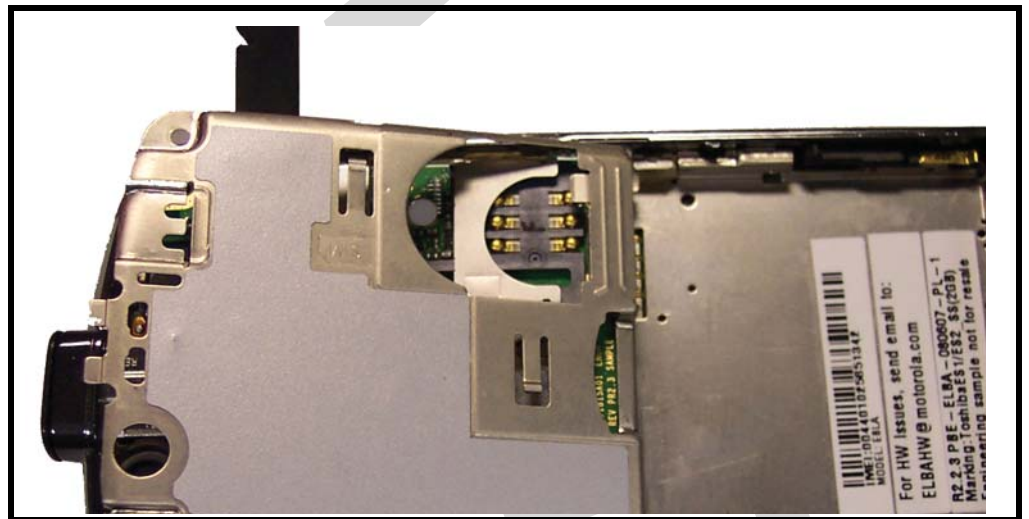


Figure 7. Removing the PCB Cover

5. To replace, align the PCB cover to the phone.
6. Attach one side of the PCB cover to the latch.